



4B, Merchant Square,
, W2

£1,150 Per Week,

NAPIER WATT

T: 0207 935 0011
E: enquiries@napierwatt.co.uk
W: napierwatt.co.uk

35 Berkeley Square, Mayfair, London, W1J 5BF





Description

A bright and spacious 3 bedroom, 2 bathroom (794 sq ft/ 73.76 sqm) situated on the third floor of this portered block. This elegant flat comprises a beautiful reception room with superb views, a superb modern fitted open plan kitchen and ample storage space.

Building features include 24 hour concierge, lift service, and secure underground parking. The managing agents also offer exclusive deals and discounts in local restaurants and gyms specifically to 4B Merchant square tenants.

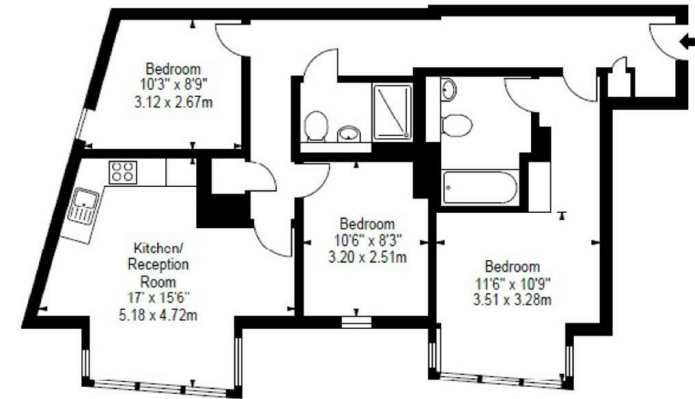
Living in this building offers easy access to superb transport links such as Paddington Train Station (Bakerloo, Hammersmith & City, Circle, District lines and Heathrow) Edgware Road (Circle, District and Bakerloo lines).

Council Westminster City, Tax Band G

Key Features

Terms

Additional costs will apply for; referencing (£36 per person & guarantor); administration (£240); renewal/extensions (£120); check-out inventory & cleaning (variable); special requests (variable). Security Deposits also apply to all tenancies.



FLAT 311
4B MERCHANT SQUARE EAST
LONDON W2

Third Floor

Approx Gross Internal Area*
794 Sq Ft - 73.76 Sq M

IMPORTANT: We would inform prospective purchasers that these sales particulars have been prepared as a general guide only. A detailed survey has not been carried out, nor the services, appliances and fittings tested. Room sizes should not be relied upon for furnishing purposes and are approximate. If floor plans are included, they are for guidance only and illustration purposes only and may not be to scale. If there are any important matters likely to affect your decision to buy, please contact us before viewing the property.